

GSDSS14N1F

Schottky Diode

Product Description

Reverse Voltage 40V
Forward Current 1A



Features

- Low Forward Voltage

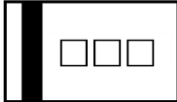
Mechanical Data

- DFN1006-2L Package
- The Color Band denotes Cathode End
- RoHS Compliant and Halogen Free

Package and Pin Assignment

DFN1006-2L		Equivalent Circuit	
			
Pin	Description	Pin	Description
1	Anode	2	Cathode

Ordering and Marking Information

Ordering Information			
Part Number	Marking Code	Package	Quantity/Reel
GSDSS14N1F	X or S14	DFN1006-2L	10,000 PCS
Marking Information			
		Product Code: <ul style="list-style-type: none">- □□□ is X or S14● The color band denotes cathode end	

Absolute Maximum Ratings (T_A=25°C unless otherwise specified)

Symbol	Parameter	Rating	Unit
V _{RRM}	Maximum repetitive peak reverse voltage	40	V
V _{RMS}	Maximum RMS voltage	28	V
V _{DC}	Maximum DC blocking voltage	40	V
I _{F(AV)}	Maximum average forward rectified current	1	A
I _{FSM}	Peak forward surge current*	5	A
P _D	Power Dissipation T _A =25°C	0.15	W
R _{θJA}	Thermal Resistance	400	°C/W
T _J	Junction Temperature Range	-55 to +125	°C
T _{STG}	Storage Temperature Range	-55 to +150	°C

* 8.3 ms single half sine-wave superimposed on rated load.

Electrical Characteristics (T_A=25°C unless otherwise specified)

Symbol	Description	Conditions	Min	Max	Unit
V _F	Instantaneous Forward Voltage	I _F =200mA	-	400	mV
		I _F =1000mA	-	600	
I _R	Reverse Leakage Current	V _R = 10V	-	40	μA
		V _R = 40V	-	100	

Typical Characteristics (T_A=25°C unless otherwise specified)

Figure 1: Forward Characteristics

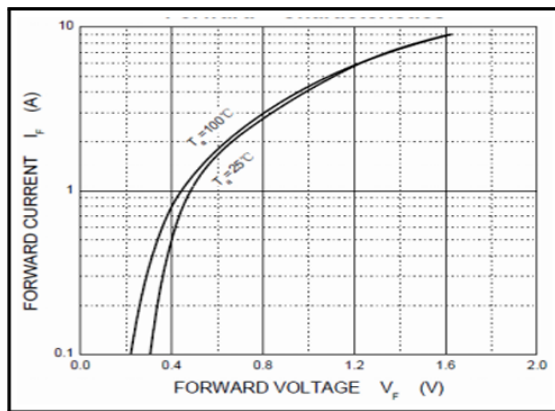


Figure 2: Reverse Characteristics

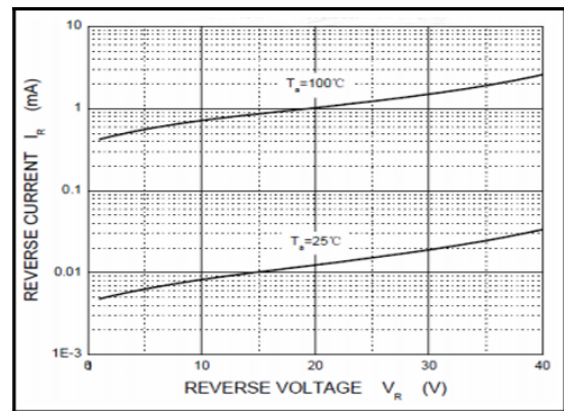
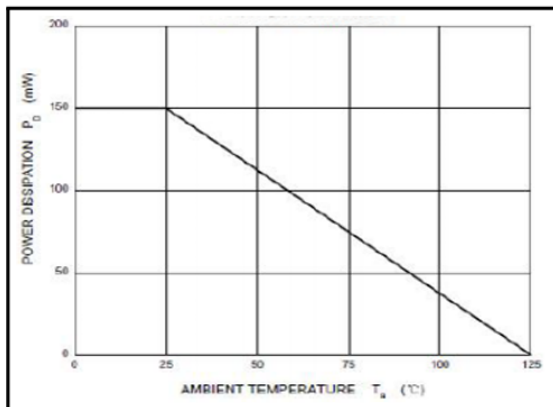
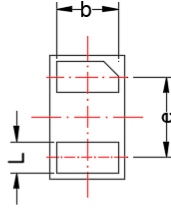
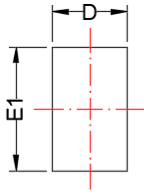


Figure 3: Power Derating Curve



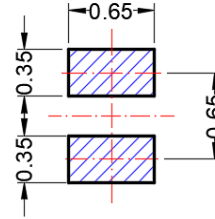
DFN1006-2L

Package Dimension

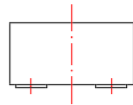
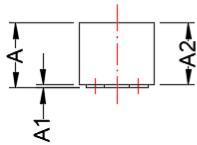


BACKSIDE VIEW

Recommended Land Pattern



Unit:mm



Dimensions

Symbol	Millimeters		Inches	
	Min	Max	Min	Max
A	0.45	0.60	0.018	0.024
A1	0.00	0.05	0.000	0.002
A2	0.40	0.60	0.016	0.024
b	0.45	0.55	0.018	0.022
D	0.55	0.65	0.022	0.026
E1	0.95	1.05	0.037	0.041
e1	0.65 BSC		0.026 BSC	
L	0.20	0.30	0.008	0.012





NOTE:



Dimensions are exclusive of Burrs, Mold Flash & Tie Bar extrusions.

NOTICE

- Globaltech Semiconductor assumes no responsibility for equipment failures that result from using products at values that exceed, even momentarily, rated values (such as maximum ratings, operating condition ranges, or other parameters) listed in products specifications of any and all Globaltech Semiconductor products described or contained herein. Globaltech Semiconductor products are not designed for use in life support appliances, devices or systems where malfunction of these products can be reasonably expected to result in personal injury. Reproduction in whole or in part is prohibited without the prior written consent of the copyright owner.
- Applications shown on the herein document are examples of standard use and operation. Customers are responsible in comprehending the suitable use in particular applications. Globaltech Semiconductor makes no representation or warranty that such applications will be suitable for the specified use without further testing or modification.
- Information furnished is believed to be accurate and reliable. However Globaltech Semiconductor assumes no responsibility for the consequences of use of such information nor for any infringement of patents or other rights of third parties, which may result from its use. No license is granted by implication or otherwise under any patent or patent rights of Globaltech Semiconductor. Specifications mentioned in this publication are subject to change without notice. This publication supersedes and replaces all information without express written approval of Globaltech Semiconductor.

CONTACT US

GS Headquarter	
	4F, NO.43-1, Lane 11, Sec. 6, Minquan E. Rd Neihu District, Taipei City 114761, Taiwan (R.O.C).
	886-2-2657-9980
	886-2-2657-3630
	sales_twn@gs-power.com

RD Division	
	824 Bolton Drive Milpitas. CA. 95035
	1-408-457-0587