

GSDSS3**D2F Series

Schottky Barrier Diode

Product Description

Reverse Voltage 40V to 200V.
Forward Current 3.0A



Features

- Low Forward Voltage Drop
- Low Power Loss, High Efficiency
- RoHS Compliant and Halogen Free

Mechanical Data

- Case: Molded Plastic, SOD-123FL Package
- Terminals: Solderable per MIL-STD-750, Method 2026
- Polarity: Color Band denotes Cathode End

Package and Pin Assignment

SOD-123FL		Equivalent Circuit
		
Pin	Description	
1	Anode	
2	Cathode	

Ordering and Marking Information

Ordering Information			
Part Number	Package	Marking Code	Quantity/Reel
GSDSS34D2F	SOD-123FL	K34	3000 PCS
GSDSS36D2F	SOD-123FL	K36	3000 PCS
GSDSS315D2F	SOD-123FL	K315	3000 PCS
GSDSS320D2F	SOD-123FL	K320	3000 PCS

Marking Information

K3 1 1

- **Product Code:**

K3

- **Voltage Code:**

1 1 is 4, 6, 15 and 20.

For examples 4 stands for 40V

and 20 stands for 200V

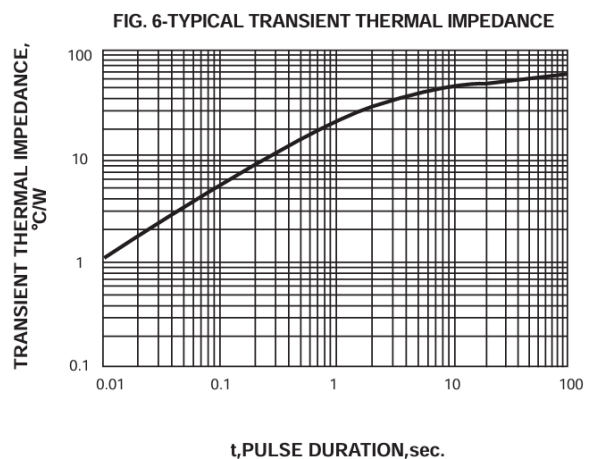
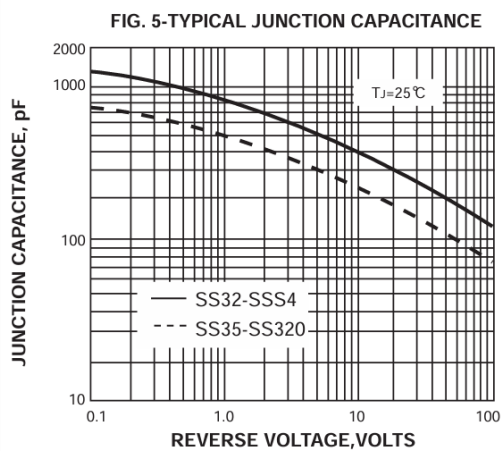
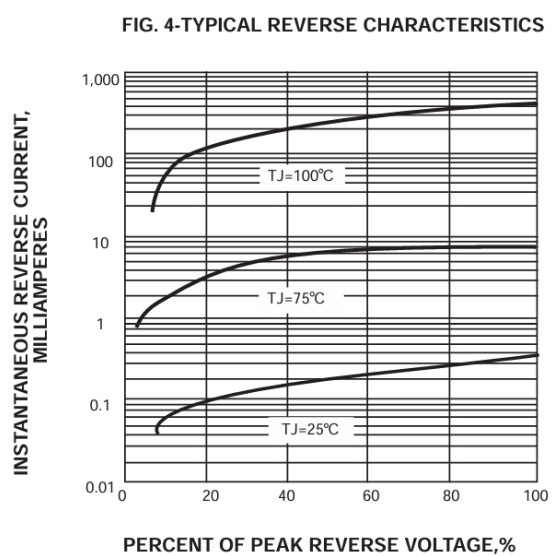
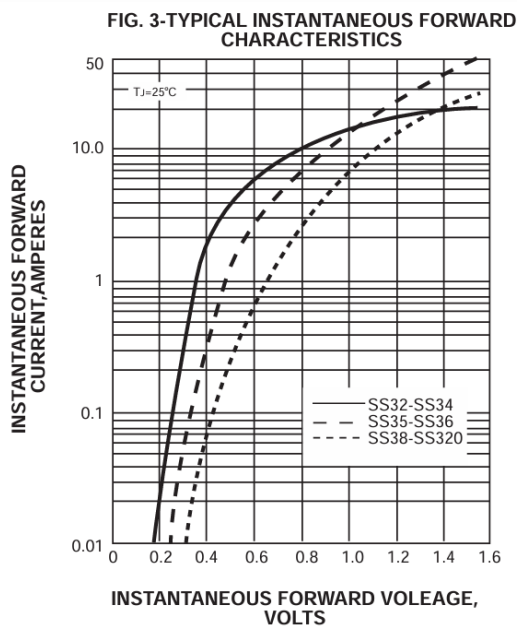
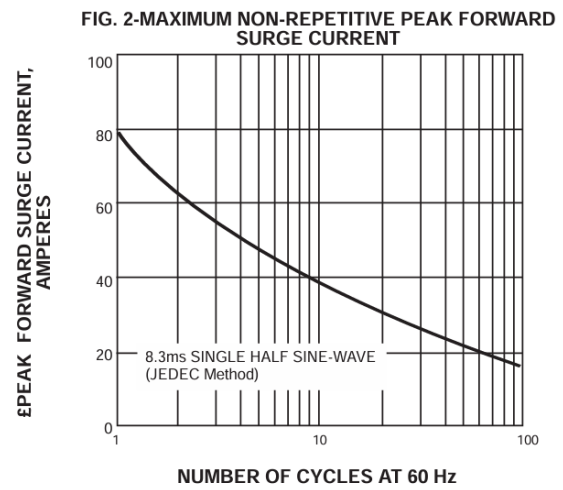
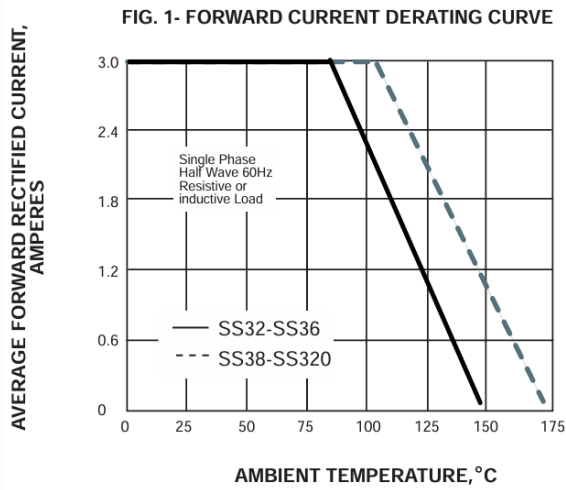
Electrical Characteristics (Ratings at 25°C Ambient Temperature Unless Otherwise Specified.)

Symbol	Conditions		34	36	315	320	Unit
V _{RRM}	Maximum Recurrent Peak Reverse Voltage		40	60	150	200	V
V _{RMS}	Maximum RMS Voltage		28	42	105	140	V
V _{DC}	Maximum DC Blocking Voltage		40	60	150	200	V
I _{F(AV)}	Maximum Average Forward Rectified Current		3.0				A
I _{FSM}	Peak Forward Surge Current (8.3ms Single Half Sine-Wave)		80				A
V _F	Maximum Forward Voltage at 3.0A (Note1)		0.55	0.7	0.85	0.95	V
I _R	Maximum Reverse Leakage Current at rated V _R	T _A = 25°C	0.5				mA
		T _A = 100°C	20	10			
C _J	Typical Junction Capacitance ⁽¹⁾		500	300			pF
R _{θJA}	Typical Thermal Resistance ⁽²⁾		88				°C/W
T _J	Operating Junction Temperature Range		-65 to +150				°C
T _{STG}	Storage Temperature Range		-65 to +150				°C

NOTES:

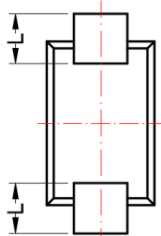
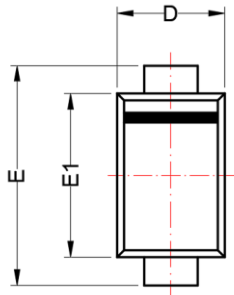
1. Measured at 1MHz and applied reverse voltage of 4.0 V_{DC} .
2. Mounted with 0.2 x 0.2" (5.0 x 5.0mm) Copper Pad Areas

Typical Characteristics (Ratings at 25°C Ambient Temperature Unless Otherwise Specified.)

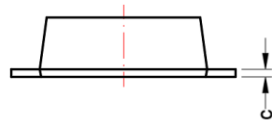
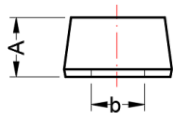


SOD-123FL

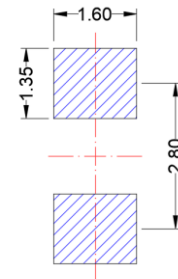
Package Dimension



BACKSIDE VIEW



Recommended Land Pattern



(Unit: mm)

Dimensions

SYMBOL	Millimeters		Inches	
	MIN	MAX	MIN	MAX
A	0.80	1.10	0.031	0.043
b	0.50	1.20	0.020	0.047
D	1.50	1.90	0.059	0.075
E	3.30	3.80	0.130	0.150
E1	2.45	2.75	0.096	0.108
c	0.05	0.20	0.002	0.008
L	0.70	0.90	0.028	0.035





NOTE:



DIMENSION DOES NOT INCLUDE MOLD FLASH, PROTRUSIONS OR GATE BURRS.

NOTICE

- Globaltech Semiconductor assumes no responsibility for equipment failures that result from using products at values that exceed, even momentarily, rated values (such as maximum ratings, operating condition ranges, or other parameters) listed in products specifications of any and all Globaltech Semiconductor products described or contained herein. Globaltech Semiconductor products are not designed for use in life support appliances, devices or systems where malfunction of these products can be reasonably expected to result in personal injury. Reproduction in whole or in part is prohibited without the prior written consent of the copyright owner.
- Applications shown on the herein document are examples of standard use and operation. Customers are responsible in comprehending the suitable use in particular applications. Globaltech Semiconductor makes no representation or warranty that such applications will be suitable for the specified use without further testing or modification.
- Information furnished is believed to be accurate and reliable. However Globaltech Semiconductor assumes no responsibility for the consequences of use of such information nor for any infringement of patents or other rights of third parties, which may result from its use. No license is granted by implication or otherwise under any patent or patent rights of Globaltech Semiconductor. Specifications mentioned in this publication are subject to change without notice. This publication supersedes and replaces all information without express written approval of Globaltech Semiconductor.

CONTACT US

GS Headquarter	
	4F.,No.43-1,Lane11,Sec.6,Minquan E.Rd NeiHu District Taipei City 114, Taiwan (R.O.C)
	886-2-2657-9980
	886-2-2657-3630
	sales_twn@gs-power.com

RD Division	
	824 Bolton Drive Milpitas. CA. 95035
	1-408-457-0587