

GS5276 Series

52KHz 3A Step-Down Voltage Regulator

Product Description

The GS5276 series of regulators are capable of driving 3A load with excellent line and load regulation. This device is available in fixed output voltages of 3.3V, 5V and an adjustable output version.

The GS5276 series offers a high-efficiency replacement for popular three-terminal linear regulators. It substantially reduces the size of the heat sink, and in some cases no heat sink is required.

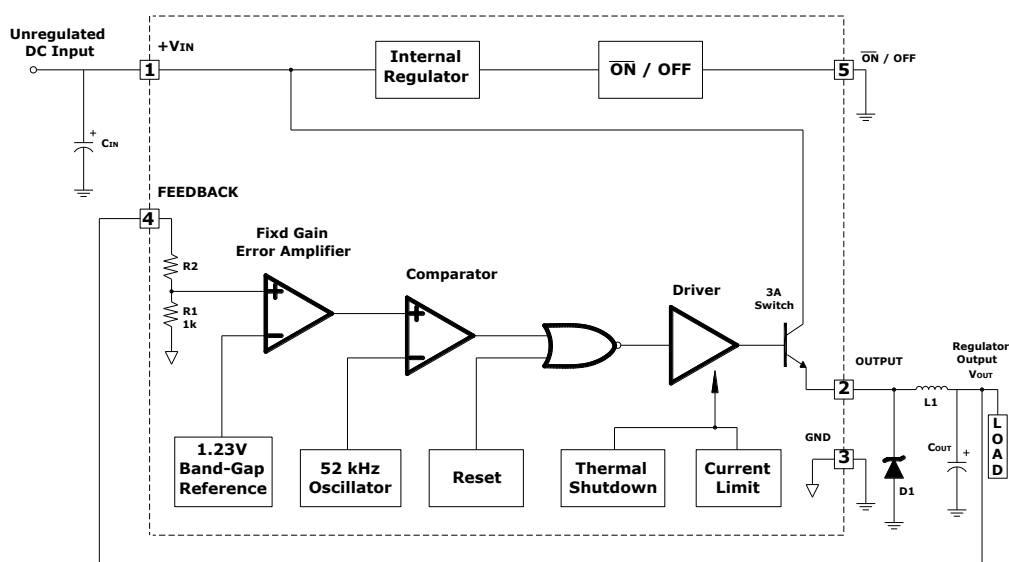
Features

- 3.3V, 5V and adjustable output versions
- Adjustable version output voltage range, 1.23V to 37V \pm 4% max over line and load conditions
- Guaranteed 3A output current
- Requires only 4 external components
- 52 KHz fixed frequency oscillator
- Thermal shutdown and current limit protection
- RoHS Compliant

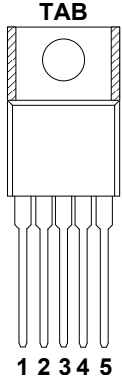
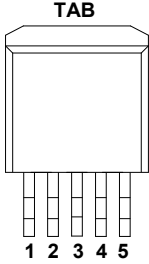
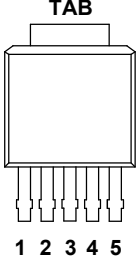
Applications

- Simple high-efficiency step-down regulator
- On-card switching regulators
- Positive to negative converter
- Efficient pre-regulator for linear regulators

Block Diagram



Packages & Pin Assignments

TO-220-5L		TO-263-5L		TO-252-5L	
					
Pin	Name	Function Description			
1	INPUT	This is the positive input supply for the IC switching regulator. A suitable input bypass capacitor must be present at this pin to minimize voltage transients and to supply the switching currents needed by the regulator.			
2	Output	Internal switch, the voltage at this pin switches between (+V _{IN} and V _{SAT}) and approximately -0.5V. To minimize coupling to sensitive circuitry, the PC board copper area connected to this pin should be kept to a minimum.			
3/TAB	GND	Circuit Ground			
4	Feedback	Senses the regulated output voltage to complete the feedback loop			
5	ON/OFF	LOW level for enable function and HIGH level for shutdown.			

Ordering and Marking Information

Ordering Information					
Part Number	Output Voltage	Package	Quantity	Marking	
				Type 1	Type 2
GS5276MF	ADJ	TO-263-5L	800 PCS/ Reel	GS5276 4 555 F 6666	CHMC D2576 555 S 6666
GS5276M33F	3.3V				
GS5276M50F	5V				
GS5276DF	ADJ	TO-252-5L	2500PCS/Reel	GS5276 4 555 F 6666	CHMC D2576 555 S 6666
GS5276D33F	3.3V				
GS5276D50F	5V				
GS5276TF	ADJ	TO-220-5L	50PCS/Tube	GS5276 4 555 F 6666	CHMC D2576 555 S 6666
GS5276T33F	3.3V				
GS5276T50F	5V				

GS 5 2 7 6 1 2 2 3		
Product Name: GS5276	Package Code: 1 - M for TO-263-5L - D for TO-252-5L - T for TO-220-5L	Voltage Code: 2 2 - Blank for ADJ - 33 for 3.3V - 50 for 5.0V
Green Level: 3 - F stands for RoHS Compliant		

Marking Information	
GS5276 4 555 F 6666	CHMC D2576 555 S 6666
Product Code: GS5276 or CHMC D2576	Package Code: 4 - M for TO-263-5L - D for TO-252-5L - T for TO-220-5L
	Voltage Code: 555 - Blank/ADJ for ADJ - 33/33D for 3.3V - 50/50D for 5.0V
Green Level: S or F stands for RoHS Compliant	GS Code 6666

Absolute Maximum Rating

Parameter	Value	Unit
Supply Voltage	45	V
$\overline{\text{ON}}$ /OFF Pin Input Voltage	-0.3 to V_{IN}	V
Output Voltage to Ground (Steady State)	-1	V
ESD Rating (HBM)	2	KV
Power Dissipation (Internally limited)	TO-220-5L	2
	TO-263-5L	2
	TO-252-5L	1.2
Thermal Resistance Junction to Ambient, $R_{\theta\text{JA}}$	TO-220-5L	62.5
	TO-263-5L	62.5
	TO-252-5L	104
Maximum Junction Temperature	+150	°C
Storage Temperature Range	-65 to +150	°C
Lead Temperature (Soldering, 10 Seconds)	260	°C

NOTE:

Stresses above those listed under “Absolute Maximum Ratings” may cause permanent damage to the device. These are stress ratings only and functional operation of the device at these or any other conditions above those indicated in the operation sections of the specifications is not implied.

Exposure to Absolute Maximum Ratings conditions for extended periods may affect device reliability.

Recommended Operating Conditions

Parameter	Value	Unit
Supply Voltage	6 to 40	V
Temperature Range	-40 to 125	°C

Electrical Characteristics

(Test circuit of figure 1) Unless otherwise specified, $V_{IN} = 12V$ for the 3.3V, 5V, and Adjustable version, $I_{LOAD} = 500mA$. For typical values $T_J = 25^\circ C$, for min/max values T_J is the operating junction temperature range that applied [Note 2], unless otherwise noted.)

Symbol	Parameter	Conditions	MIN	TYP	MAX	Unit
Device Parameters						
I_B	Feedback Bias Current	$V_{OUT} = 5V$ (Adjustable Version Only)				
		$T_J = 25^\circ C$	-	50	100	nA
		$T_J = -40^\circ C$ to $125^\circ C$	-	-	500	nA
F_{OSC}	Oscillator Frequency	$T_J = 25^\circ C$ (Note 3)	-	52	-	kHz
		$T_J = 0^\circ C$ to $125^\circ C$	47	-	58	kHz
		$T_J = -40^\circ C$ to $125^\circ C$	42	-	63	kHz
V_{SAT}	Saturation Voltage	$I_{OUT} = 3A$ (Note 4)				
		$T_J = 25^\circ C$	-	1.4	1.8	V
		$T_J = -40^\circ C$ to $125^\circ C$	-	-	2.0	V
DC	Max Duty Cycle (ON)	(Note 5)	93	98	-	%
I_{CL}	Current Limit	(Notes 3, 4)				
		$T_J = 25^\circ C$	4.2	5.8	6.9	A
		$T_J = -40^\circ C$ to $125^\circ C$	3.5	-	7.5	A
I_L	Output Leakage Current	$T_J = 25^\circ C$ (Notes 6, 7)				
		Output = 0V	-	0.8	2.0	mA
		Output = -1V	-	7.5	30	mA
I_Q	Quiescent Current	(Note 6) $T_J = 25^\circ C$	-	5	10	mA
I_{STBY}	Standby Quiescent Current	\overline{ON}/OFF Pin=5V(OFF), $T_J = 25^\circ C$	-	50	200	μA
\overline{ON}/OFF Control						
V_{IH}	\overline{ON}/OFF Pin Logic Input Level	$V_{OUT} = 0V$, $T_J = 25^\circ C$	2.2	1.4	-	V
		$V_{OUT} = 0V$, $T_J = -40^\circ C$ to $125^\circ C$	2.4	-	-	V
V_{IL}	\overline{ON}/OFF Pin Logic Input Level	$V_{OUT} = \text{Nominal Output Voltage}$				
		$T_J = 25^\circ C$	-	1.2	1.0	V
		$T_J = -40^\circ C$ to $125^\circ C$	-	-	0.8	V
I_{IH}	\overline{ON}/OFF Pin Input Current	\overline{ON}/OFF Pin=5V(OFF), $T_J = 25^\circ C$		12	30	μA
I_{IL}	\overline{ON}/OFF Pin Input Current	\overline{ON}/OFF Pin=0V(ON), $T_J = 25^\circ C$		0	10	μA

Electrical Characteristics (T_J=25°C unless otherwise specified.)

GS5276-3.3

Symbol	Parameter	Conditions	MIN	TYP	MAX	Unit
V _{OUT}	Output Voltage	V _{IN} = 12V, I _{LOAD} = 0.5A, T _J = 25 °C	3.234	3.3	3.366	V
		6V ≤ V _{IN} ≤ 40V, 0.5A ≤ I _{LOAD} ≤ 3A				
		T _J = 25 °C	3.168	3.3	3.432	V
		T _J = -40 °C to 125 °C	3.135	3.3	3.465	
η	Efficiency	V _{IN} = 12V, I _{LOAD} = 3A		75		%

GS5276-5.0

Symbol	Parameter	Conditions	MIN	TYP	MAX	Unit
V _{OUT}	Output Voltage	V _{IN} = 12V, I _{LOAD} = 0.5A, T _J = 25 °C	4.90	5.0	5.10	V
		8V ≤ V _{IN} ≤ 40V, 0.5A ≤ I _{LOAD} ≤ 3A				
		T _J = 25 °C	4.80	5.0	5.2	V
		T _J = -40 °C to 125 °C	4.75	5.0	5.25	
η	Efficiency	V _{IN} = 12V, I _{LOAD} = 3A		77		%

GS5276-ADJ

Symbol	Parameter	Conditions	MIN	TYP	MAX	Unit
V _{OUT}	Output Voltage	V _{IN} = 12V, I _{LOAD} = 0.5A, V _{OUT} = 5V, T _J = 25 °C	1.217	1.23	1.243	V
		6V ≤ V _{IN} ≤ 40V, 0.5A ≤ I _{LOAD} ≤ 3A				
		T _J = 25 °C	1.193	1.23	1.267	V
		T _J = -40 °C to 125 °C	1.180	1.23	1.280	
η	Efficiency	V _{IN} = 12V, I _{LOAD} = 3A, V _{OUT} = 5V		77		%

Note:

- External components such as the catch diode, inductor, input and output capacitors can affect switching regulator system performance. When the GS5276 is used as shown in the Figure 7 test circuit, system performance will be shown in system parameters section.
- Test junction temperature range for the GS5276: T_{LOW} = -40 °C T_{HIGH} = +125 °C
- The oscillator frequency reduces to approximately 18kHz in the event of an output short or an overload which causes the regulated output voltage to drop approximately 40% from the nominal output voltage. The self-protection feature lowers the average dissipation of the IC by lowering the minimum duty cycle from 5% down to approximately 2%.
- Output (Pin 2) sourcing current. No diode, inductor or capacitor connected to output pin.
- Feedback (Pin 4) removed from output and connected to 0V.
- Feedback (Pin 4) removed from output and connected to +12V for the Adjustable, 3.3V and 5V versions, and +25V for the 12V version, to force the output transistor "OFF".
- V_{IN} = 40V.

Typical Performance Characteristics

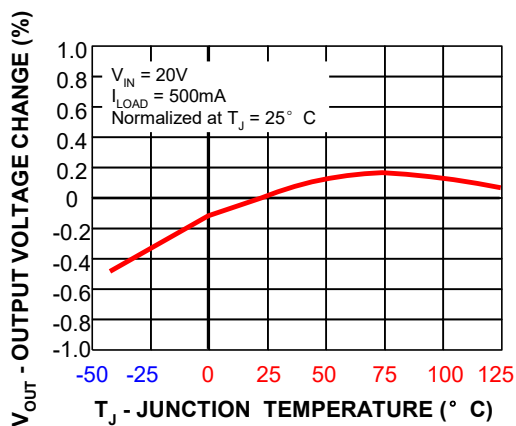


Fig.1 Normalized Output Voltage

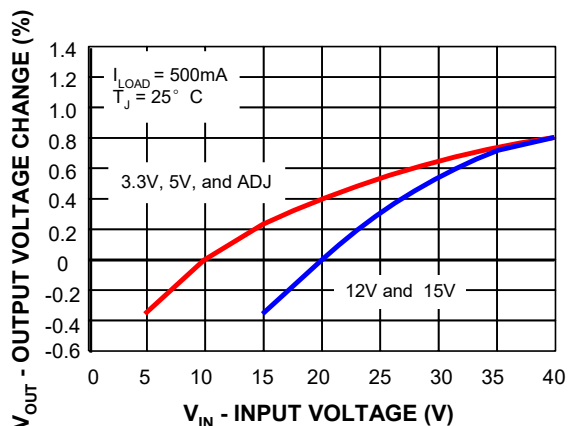


Fig.2 Line Regulation

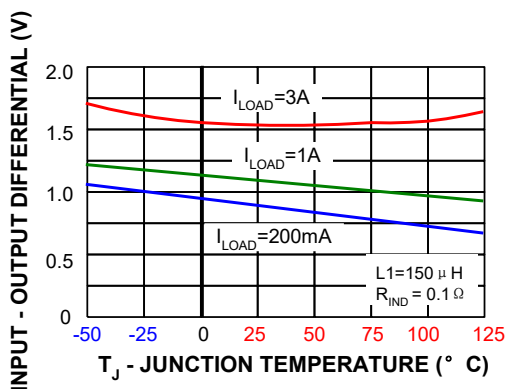


Fig.3 Dropout Voltage

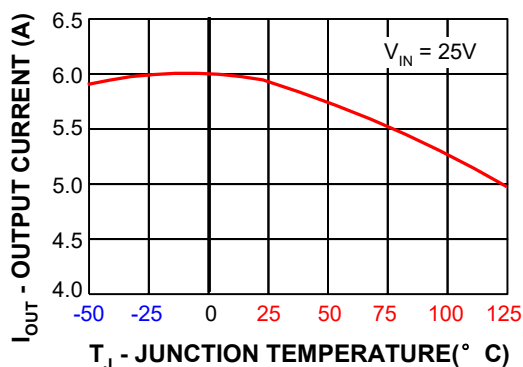


Fig.4 Current Limit

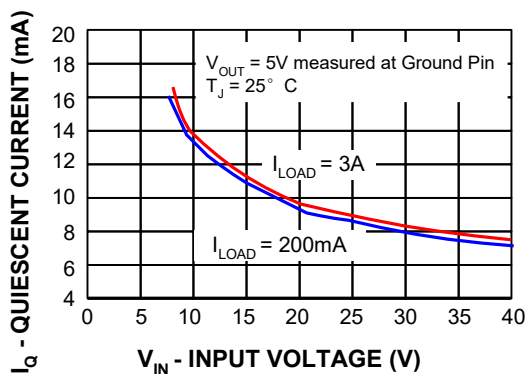


Fig.5 Quiescent Current

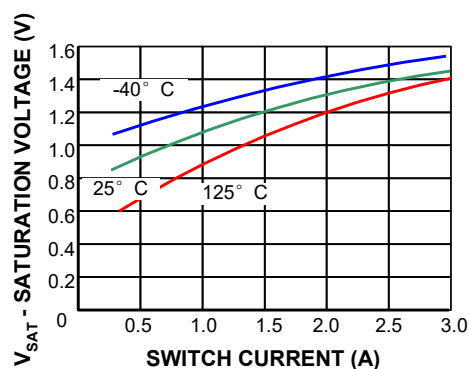


Fig.6 Switch Saturation Voltage

Typical Performance Characteristics

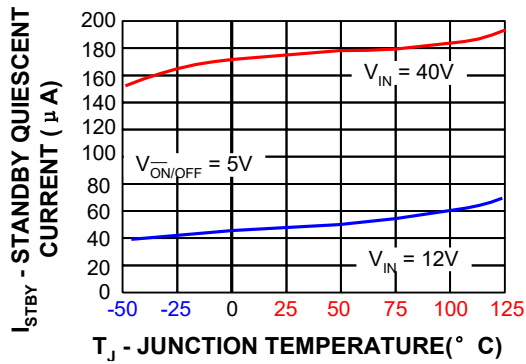


Fig.7 Standby Quiescent Current (T_J)

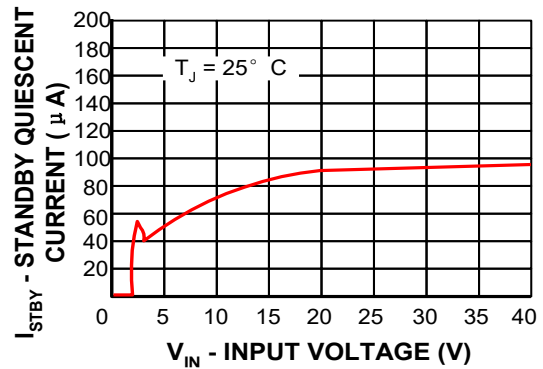


Fig.8 Standby Quiescent Current (V_{IN})

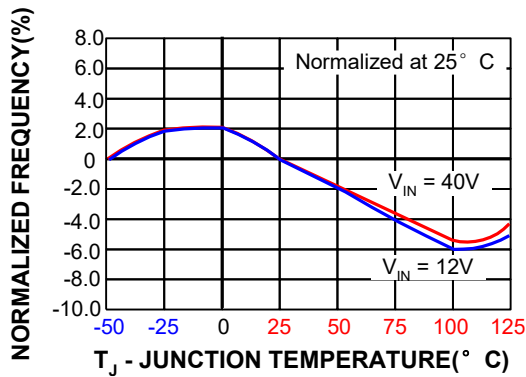


Fig.9 Oscillator Frequency

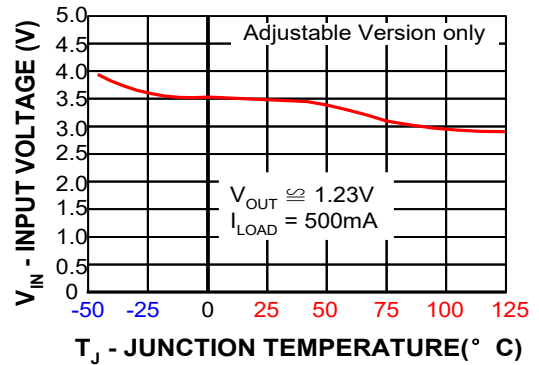


Fig.10 Minimum Operating Voltage

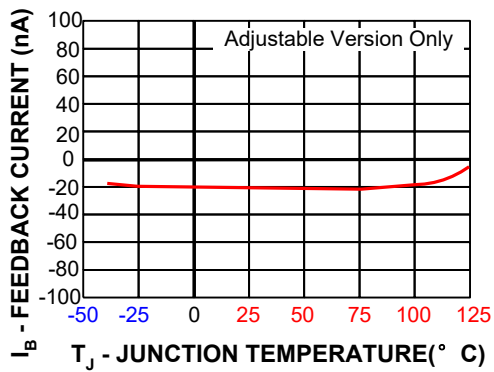


Fig.11 Feedback Pin Current

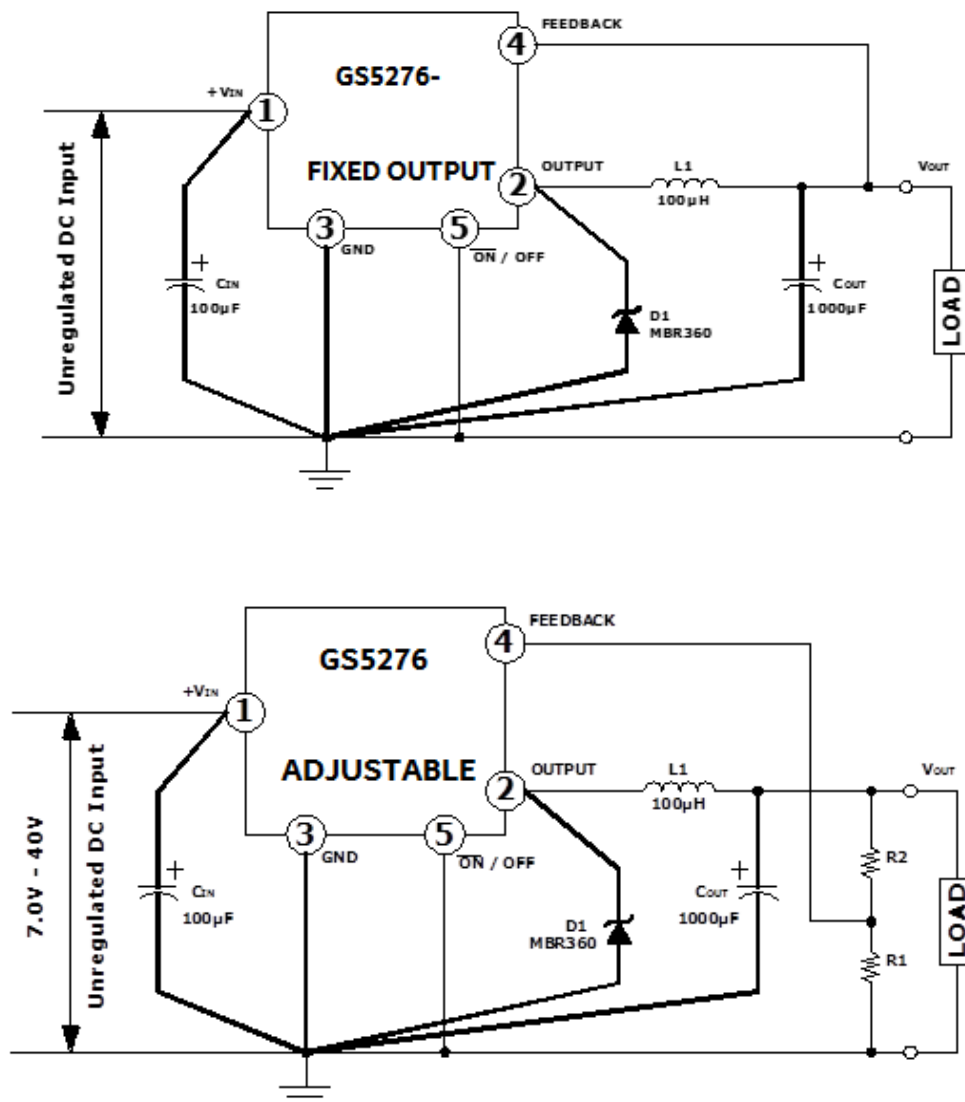
Typical Applications

As in any switching regulator, the layout of the printed board (PCB) is very important. Rapidly switching currents associated with wiring inductance, stray capacitance and parasitic inductance of the printed circuit board traces can generate voltage transients, which can generate electromagnetic interferences (EMI) and affect the desired operation. As indicated in the Figure 1, to minimize inductance and ground loops, the length of the leads indicated by heavy lines should be kept as short as possible.

For best results, single-point grounding (as indicated) or ground plane construction should be used.

On the other hand, the PCB area connected to the Pin 2 (emitter of the internal switch) of the GS5276 should be kept to a minimum in order to minimize coupling to sensitive circuitry.

Another sensitive part of the circuit is the feedback. It is important to keep the sensitive feedback wiring short. To assure this, physically locate the programming resistors near to the regulator, when using the Adjustable version of the GS5276 regulator.



C_{IN} —100µF, 75V Aluminum Electrolytic

C_{OUT} —1000µF, 25V, Aluminum Electrolytic

$D1$ —Schottky, MBR360

$L1$ —100 µH

$R1$ —2.0k, 0.1%

$R2$ —6.12k, 0.1%

$V_{OUT} = V_{REF} (1 + R_2/R_1)$, $R_2 = R_1 (V_{OUT} / V_{REF} - 1)$, where $V_{REF} = 1.23V$, $R1$ between 1k and 5k

Applications Information

INPUT CAPACITOR (C_{IN})

To maintain stability, the regulator input pin must be bypassed with at least a 100 μF electrolytic capacitor. The capacitor's leads must be kept short, and located near the regulator.

If the operating temperature range includes temperatures below -25°C , the input capacitor value may need to be larger. With most electrolytic capacitors, the capacitance value decreases and the ESR increases with lower temperatures and age. Paralleling a ceramic or solid tantalum capacitor will increase the regulator stability at cold temperatures. For maximum capacitor operating lifetime, the capacitor's RMS ripple current rating should be greater than

$$1.2 \times \left(\frac{t_{ON}}{T} \right) \times I_{LOAD}$$

where $\frac{t_{ON}}{T} = \frac{V_{OUT}}{V_{IN}}$ for a buck regulator

and $\frac{t_{ON}}{T} = \frac{|V_{OUT}|}{|V_{OUT}| + V_{IN}}$ for a buck-boost regulator.

INDUCTOR SELECTION

All switching regulators have two basic modes of operation: continuous and discontinuous. The difference between the two types relates to the inductor current, whether it is flowing continuously, or if it drops to zero for a period of time in the normal switching cycle. Each mode has distinctively different operating characteristics, which can affect the regulator performance and requirements.

The GS5276 can be used for both continuous and discontinuous modes of operation.

The inductor value were designed for buck regulator designs of the continuous inductor current type. When using inductor values shown in the inductor selection guide, the peak-to-peak inductor ripple current will be approximately 20% to 30% of the maximum DC current. With relatively heavy load currents, the circuit operates in the continuous mode (inductor current always flowing), but under light load conditions, the circuit will be forced to the discontinuous mode (inductor current falls to zero for a period of time). This discontinuous mode of operation is perfectly acceptable. For light loads (less than approximately 300 mA) it may be desirable to operate the regulator in the discontinuous mode, primarily because of the lower inductor values required for the discontinuous mode.

The selection guide chooses inductor values suitable for continuous mode operation, but if the inductor value chosen is prohibitively high, the designer should investigate the possibility of discontinuous operation.

Inductors are available in different styles such as pot core, toroid, E-frame, bobbin core, etc., as well as different core materials, such as ferrites and powdered iron. The least expensive, the bobbin core type, consists of wire wrapped on a ferrite rod core. This type of construction makes for an inexpensive inductor, but since the magnetic flux is not completely contained within the core, it generates more electromagnetic interference (EMI). This EMI can cause problems in sensitive circuits, or can give incorrect scope readings because of induced voltages in the scope probe.

The inductors listed in the selection chart include ferrite pot core construction for AIE, powdered iron toroid for Pulse Engineering, and ferrite bobbin core for Renco.

An inductor should not be operated beyond its maximum rated current because it may saturate. When an inductor begins to saturate, the inductance decreases rapidly and the inductor begins to look mainly resistive (the DC resistance of the winding). This will cause the switch current to rise very rapidly. Different inductor types have different saturation characteristics, and this should be kept in mind when selecting an inductor.

The inductor manufacturer's data sheets include current and energy limits to avoid inductor saturation.

Applications Information

Inductor Ripple Current

When the switcher is operating in the continuous mode, the inductor current waveform ranges from a triangular to a sawtooth type of waveform (depending on the input voltage). For a given input voltage and output voltage, the peak-to-peak amplitude of this inductor current waveform remains constant. As the load current rises or falls, the entire sawtooth current waveform also rises or falls. The average DC value of this waveform is equal to the DC load current (in the buck regulator configuration).

If the load current drops to a low enough level, the bottom of the sawtooth current waveform will reach zero, and the switcher will change to a discontinuous mode of operation. This is a perfectly acceptable mode of operation. Any buck switching regulator (no matter how large the inductor value is) will be forced to run discontinuous if the load current is light enough.

Output Capacitor

An output capacitor is required to filter the output voltage and is needed for loop stability. The capacitor should be located near the GS5276 using short pc board traces. Standard aluminum electrolytics are usually adequate, but low ESR types are recommended for low output ripple voltage and good stability. The ESR of a capacitor depends on many factors, some which are: the value, the voltage rating, physical size and the type of construction. In general, low value or low voltage (less than 12V) electrolytic capacitors usually have higher ESR numbers.

The amount of output ripple voltage is primarily a function of the ESR (Equivalent Series Resistance) of the output capacitor and the amplitude of the inductor ripple current (ΔI_{IND}). See the section on inductor ripple current in Application Hints.

The lower capacitor values (220 μ F–1000 μ F) will allow typically 50 mV to 150 mV of output ripple voltage, while larger-value capacitors will reduce the ripple to approximately 20 mV to 50 mV.

Output Ripple Voltage = (ΔI_{IND}) (ESR of C_{OUT})

To further reduce the output ripple voltage, several standard electrolytic capacitors may be paralleled, or a higher-grade capacitor may be used. Such capacitors are often called “high-frequency,” “low-inductance,” or “low-ESR.” These will reduce the output ripple to 10 mV or 20 mV. However, when operating in the continuous mode, reducing the ESR below 0.03 Ω can cause instability in the regulator. Tantalum capacitors can have a very low ESR, and should be carefully evaluated if it is the only output capacitor. Because of their good low temperature characteristics, a tantalum can be used in parallel with aluminum electrolytic, with the tantalum making up 10% or 20% of the total capacitance. The capacitor’s ripple current rating at 52 kHz should be at least 50% higher than the peak-to-peak inductor ripple current.

Catch Diode

Buck regulators require a diode to provide a return path for the inductor current when the switch is off. This diode should be located close to the GS5276 using short leads and short printed circuit traces.

Because of their fast switching speed and low forward voltage drop, Schottky diodes provide the best efficiency, especially in low output voltage switching regulators (less than 5V). Fast-Recovery, High-Efficiency, or Ultra-Fast Recovery diodes are also suitable, but some types with an abrupt turn-off characteristic may cause instability and EMI problems. A fast-recovery diode with soft recovery characteristics is a better choice. Standard 60 Hz diodes (e.g., 1N4001 or 1N5400, etc.) are also **not** suitable.

Applications Information

Output Voltage Ripple and Transients

The output voltage of a switching power supply will contain a sawtooth ripple voltage at the switcher frequency, typically about 1% of the output voltage, and may also contain short voltage spikes at the peaks of the sawtooth waveform.

The output ripple voltage is due mainly to the inductor sawtooth ripple current multiplied by the ESR of the output capacitor. (See the inductor selection in the application hints.) The voltage spikes are present because of the fast switching action of the output switch, and the parasitic inductance of the output filter capacitor. To minimize these voltage spikes, special low inductance capacitors can be used, and their lead lengths must be kept short. Wiring inductance, stray capacitance, as well as the scope probe used to evaluate these transients, all contribute to the amplitude of these spikes.

An additional small LC filter (20 μ H & 100 μ F) can be added to the output (as shown in Figure 7) to further reduce the amount of output ripple and transients. A 10 x reduction in output ripple voltage and transients is possible with this filter.

Feedback Connection

The GS5276 (fixed voltage versions) feedback pin must be wired to the output voltage point of the switching power supply. When using the adjustable version, physically locate both output voltage programming resistors near the GS5276 to avoid picking up unwanted noise. Avoid using resistors greater than 100 k Ω because of the increased chance of noise pickup.

On /Off Input

For normal operation, the ON/OFF pin should be grounded or driven with a low-level TTL voltage (typically below 1.6V). To put the regulator into standby mode, drive this pin with a high-level TTL or CMOS signal. The ON /OFF pin can be safely pulled up to +VIN without a resistor in series with it. The ON/OFF pin should not be left open.

Grounding

To maintain output voltage stability, the power ground connections must be low-impedance (see Figure 1). For the 5-lead TO-220 and TO-263 style package, both the tab and pin 3 are ground and either connection may be used, as they are both part of the same copper lead frame.

Heat Sink/Thermal Considerations

In many cases, only a small heat sink is required to keep the GS5276 junction temperature within the allowed operating range. For each application, to determine whether or not a heat sink will be required, the following must be identified:

1. Maximum ambient temperature (in the application).
2. Maximum regulator power dissipation (in application).
3. Maximum allowed junction temperature (125°C for the GS5276). For a safe, conservative design, an approximately 15°C cooler than the maximum temperatures should be selected.
4. GS5276 package thermal resistances θ_{JA} and θ_{JC} .

Total power dissipated by the GS5276 can be estimated as follows:

$$P_D = (V_{IN})(I_Q) + (V_O/V_{IN})(I_{LOAD})(V_{SAT})$$

where I_Q (quiescent current) and V_{SAT} can be found in the Characteristic Curves shown previously, V_{IN} is the applied minimum input voltage, V_O is the regulated output voltage, and I_{LOAD} is the load current. The dynamic losses during turn-on and turn-off are negligible if an Schottky type catch diode is used.

When no heat sink is used, the junction temperature rise can be determined by the following:

$$\Delta T_J = (P_D) (\theta_{JA})$$

Applications Information

To arrive at the actual operating junction temperature, add the junction temperature rise to the maximum ambient temperature.

$$T_J = \Delta T_J + T_A$$

If the actual operating junction temperature is greater than the selected safe operating junction temperature determined in step 3, then a heat sink is required.

When using a heat sink, the junction temperature rise can be determined by the following:

$$\Delta T_J = (P_D) (\theta_{JC} + \theta_{interface} + \theta_{Heat\ sink})$$

The operating junction temperature will be:

$$T_J = T_A + \Delta T_J$$

As above, if the actual operating junction temperature is greater than the selected safe operating junction temperature, then a larger heat sink is required (one that has a lower thermal resistance).

Undervoltage Lockout

In some applications it is desirable to keep the regulator off until the input voltage reaches a certain threshold. An undervoltage lockout circuit that accomplishes this task is shown in Figure 2, while Figure 3 shows the same circuit applied to a buck-boost configuration. These circuits keep the regulator off until the input voltage reaches a predetermined level.

$$V_{TH} \approx V_{Z1} + 2V_{BE}(Q1)$$

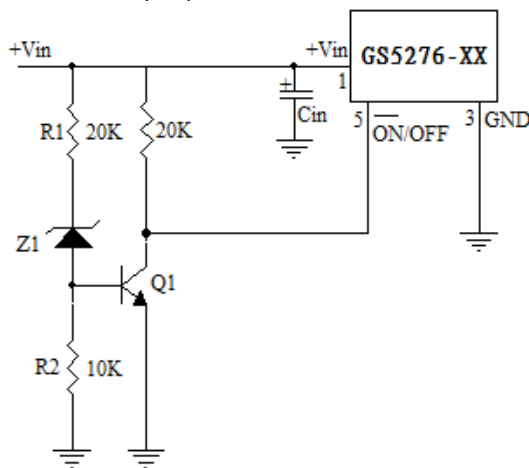


FIGURE 2. Undervoltage Lockout for Buck Circuit

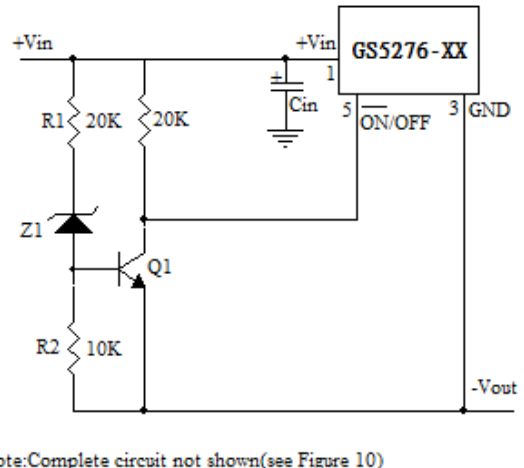


FIGURE 3. Undervoltage Lockout for Buck-Boost Circuit

Applications Information

Delayed Startup

The ON /OFF pin can be used to provide a delayed startup feature as shown in Figure 4. With an input voltage of 20V and for the part values shown, the circuit provides approximately 10 ms of delay time before the circuit begins switching. Increasing the RC time constant can provide longer delay times. But excessively large RC time constants can cause problems with input voltages that are high in 60 Hz or 120 Hz ripple, by coupling the ripple into the ON /OFF pin.

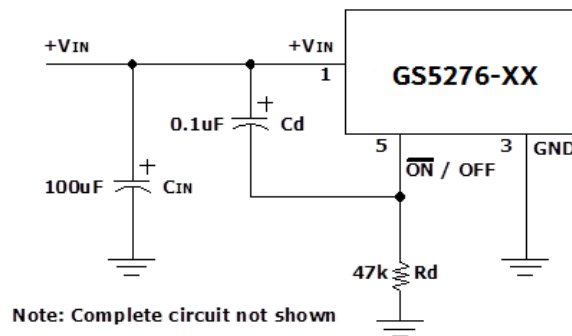


FIGURE 4. Delayed Startup

Adjustable Output, Low-Ripple Power Supply

A 3A power supply that features an adjustable output voltage is shown in Figure 5. An additional L-C filter that reduces the output ripple by a factor of 10 or more is included in this circuit.

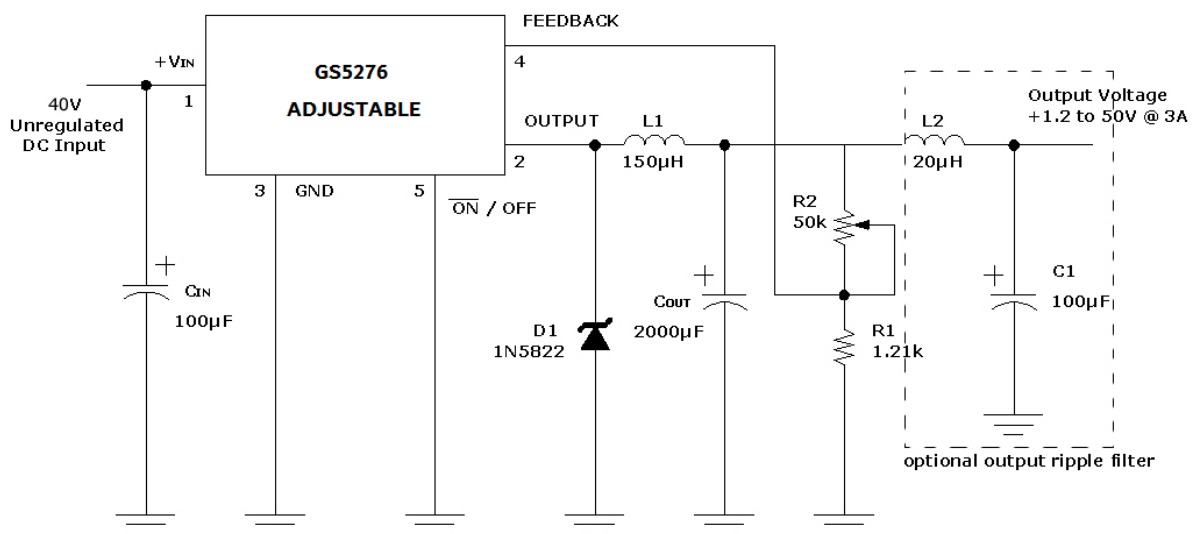
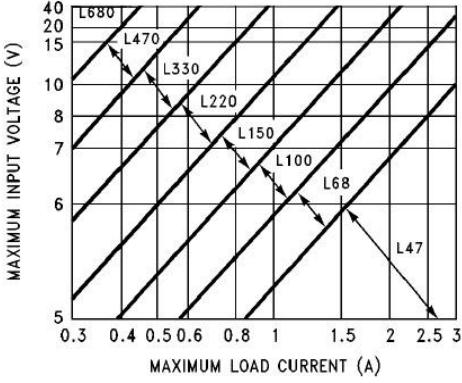
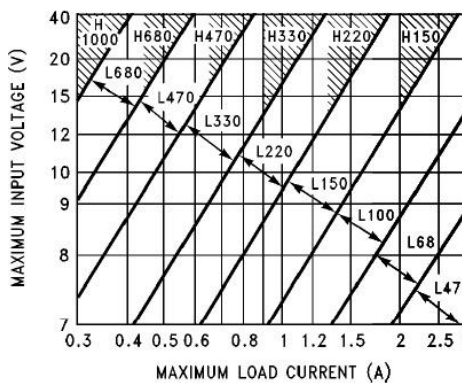
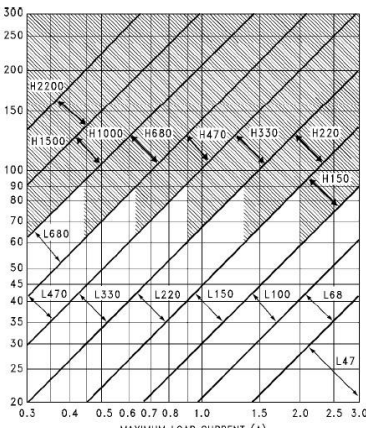


FIGURE 5. 1.2V to 40V Adjustable 3A Power Supply with Low Output Ripple

Design Procedure

<p style="text-align: center;">PROCEDURE (Fixed Output Voltage Versions)</p>	<p style="text-align: center;">EXAMPLE (Fixed Output Voltage Versions)</p>
<p>Given: V_{OUT} = Regulated Output Voltage (3.3V, 5V, 12V, or 15V) $V_{IN}(\text{Max})$ = Maximum Input Voltage $I_{LOAD}(\text{Max})$ = Maximum Load Current</p>	<p>Given: V_{OUT} = 5V $V_{IN}(\text{Max})$ = 15V $I_{LOAD}(\text{Max})$ = 3A</p>
<p>1. Inductor Selection (L1) A. Select the correct Inductor value selection guide from Figures 3, 4, 5 or Figure 6. (Output voltages of 3.3V, 5V, 12V or 15V respectively). For other output voltages, see the design procedure for the adjustable version. B. From the inductor value selection guide, identify the inductance region intersected by $V_{IN}(\text{Max})$ and $I_{LOAD}(\text{Max})$, and note the inductor code for that region. C. The inductor chosen must be rated for operation at the GS5276 switching frequency (52 kHz) and for a current rating of $1.15 \times I_{LOAD}$. For additional inductor information, see the inductor section in the Application Hints section of this data sheet.</p>	<p>1. Inductor Selection (L1) A. Use the selection guide shown in Figure 4. B. From the selection guide, the inductance area intersected by the 15V line and 3A line is L100. C. Inductor value required is 100 μH.</p>
 <p style="text-align: center;">GS5276-33</p>	 <p style="text-align: center;">GS5276-50</p>
 <p style="text-align: center;">GS5276-ADJ</p>	

Design Procedure

2. Output Capacitor Selection (C_{OUT})

A. The value of the output capacitor together with the inductor defines the dominate pole-pair of the switching regulator loop. For stable operation and an acceptable output ripple voltage, (approximately 1% of the output voltage) a value between 100 μ F and 470 μ F is recommended.

B. The capacitor's voltage rating should be at least 1.5 times greater than the output voltage. For a 5V regulator, a rating of at least 8V is appropriate, and a 10V or 15V rating is recommended. Higher voltage electrolytic capacitors generally have lower ESR numbers, and for this reason it may be necessary to select a capacitor rated for a higher voltage than would normally be needed.

3. Catch Diode Selection (D1)

A. The catch-diode current rating must be at least 1.2 times greater than the maximum load current. Also, if the power supply design must withstand a continuous output short, the diode should have a current rating equal to the maximum current limit of the GS5276. The most stressful condition for this diode is an overload or shorted output condition.

B. The reverse voltage rating of the diode should be at least 1.25 times the maximum input voltage.

4. Input Capacitor (C_{IN})

An aluminum or tantalum electrolytic bypass capacitor located close to the regulator is needed for stable operation.

2. Output Capacitor Selection (C_{OUT})

A. C_{OUT} = 680 μ F to 2000 μ F standard aluminum electrolytic.

B. Capacitor voltage rating = 20V.

3. Catch Diode Selection (D1)

A. For this example, a 3A current rating is adequate.

B. Use a 20V 1N5823 or SR302 Schottky diode.

4. Input Capacitor (C_{IN})

A 100 μ F, 25V aluminum electrolytic capacitor located near the input and ground pins provides sufficient bypassing.

Design Procedure

PROCEDURE (Adjustable Output Version)	EXAMPLE (Adjustable Output Version)
<p>Given: V_{OUT} = Regulated Output Voltage V_{IN} (Max) = Maximum Input Voltage I_{LOAD} (Max) = Maximum Load Current F = Switching Frequency (Fixed at 52 kHz)</p>	<p>Given: V_{OUT} = 10V V_{IN} (Max) = 25V I_{LOAD} (Max) = 3A F = 52 kHz</p>
<p>1. Programming Output Voltage (Selecting R_1 and R_2, as shown in Figure 1) Use the following formula to select the appropriate resistor values.</p> $V_{OUT} = V_{REF} \left(1 + \frac{R_2}{R_1}\right) \quad \text{where } V_{REF}=1.23V$ <p>R_1 can be between 1k and 5k. (For best temperature coefficient and stability with time, use 1% metal film resistors)</p> $R_2 = R_1 \left(\frac{V_{OUT}}{V_{REF}} - 1\right)$	<p>1. Programming Output Voltage (Selecting R_1 and R_2)</p> $V_{OUT} = 1.23 \left(1 + \frac{R_2}{R_1}\right) \quad \text{Select } R_1=1k$ $R_2 = R_1 \left(\frac{V_{OUT}}{V_{REF}} - 1\right) = 1k \left(\frac{10V}{1.32V} - 1\right)$ $R_2 = 1k (8.13 - 1) = 7.13k, \text{ closest 1\% value is } 7.15k$
<p>2. Inductor Selection (L1)</p> <p>A. Calculate the inductor Volt • microsecond constant, $E \cdot T$ ($V \cdot \mu s$), from the following formula:</p> $E \cdot T = (V_{IN} - V_{OUT}) \frac{V_{OUT}}{V_{IN}} \cdot \frac{1000}{F(\text{in kHz})} \quad (V \cdot \mu s)$ <p>B. Use the $E \cdot T$ value from the previous formula and match it with the $E \cdot T$ number on the vertical axis of the Inductor Value Selection Guide</p> <p>C. On the horizontal axis, select the maximum load current.</p> <p>D. Identify the inductance region intersected by the $E \cdot T$ value and the maximum load current value, and note the inductor code for that region.</p> <p>E. The inductor chosen must be rated for operation at the GS5276 switching frequency (52 kHz) and for a current rating of $1.15 \times I_{LOAD}$. For additional inductor information, see the inductor section in the application hints section of this data sheet.</p>	<p>2. Inductor Selection (L1)</p> <p>A. Calculate $E \cdot T$ ($V \cdot \mu s$)</p> $E \cdot T = (25-10) \cdot \frac{10}{25} \cdot \frac{1000}{52} = 115 \quad (V \cdot \mu s)$ <p>B. $E \cdot T = 115 \quad V \cdot \mu s$</p> <p>C. I_{LOAD} (Max) = 3A</p> <p>D. Inductance Region = H150</p> <p>E. Inductor Value = 150 μH</p>

Design Procedure

3. Output Capacitor Selection (C_{OUT})

A. The value of the output capacitor together with the inductor defines the dominate pole-pair of the switching regulator loop. For stable operation, the capacitor must satisfy the following requirement:

$$C_{OUT} \geq 13,300 \frac{V_{IN}(MAX)}{V_{OUT} \cdot L(\mu H)} (\mu F)$$

The above formula yields capacitor values between 10 μF and 2200 μF that will satisfy the loop requirements for stable operation. But to achieve an acceptable output ripple voltage, (approximately 1% of the output voltage) and transient response, the output capacitor may need to be several times larger than the above formula yields.

B. The capacitor's voltage rating should be at last 1.5 times greater than the output voltage. For a 10V regulator, a rating of at least 15V or more is recommended. Higher voltage electrolytic capacitors generally have lower ESR numbers, and for this reason it may be necessary to select a capacitor rate for a higher voltage than would normally be needed.

3. Output Capacitor Selection (C_{OUT})

$$C_{OUT} > 13,300 \frac{25}{10 \cdot 150} = 22.2(\mu F)$$

However, for acceptable output ripple voltage select

$$C_{OUT} \geq 680 \mu F$$

$C_{OUT} = 680 \mu F$ electrolytic capacitor

4. Catch Diode Selection (D1)

A. The catch-diode current rating must be at least 1.2 times greater than the maximum load current. Also, if the power supply design must withstand a continuous output short, the diode should have a current rating equal to the maximum current limit of the GS5276. The most stressful condition for this diode is an overload or shorted output.

B. The reverse voltage rating of the diode should be at least 1.25 times the maximum input voltage.

4. Catch Diode Selection (D1)

A. For this example, a 3.3A current rating is adequate.

B. Use a 30V 31DQ03 Schottky diode.

5. Input Capacitor (C_{IN})

An aluminum or tantalum electrolytic bypass capacitor located close to the regulator is needed for stable operation.

5. Input Capacitor (C_{IN})

A 100 μF aluminum electrolytic capacitor located near the input and ground pins provides sufficient bypassing.

Definition of Terms

Buck Regulator

A switching regulator topology in which a higher voltage is converted to a lower voltage. Also known as a step-down switching regulator.

Buck-Boost Regulator

A switching regulator topology in which a positive voltage is converted to a negative voltage without a transformer.

Duty Cycle (D)

Ratio of the output switch's on-time to the oscillator period.

$$\text{for buck regulator } D = \frac{t_{\text{ON}}}{T} = \frac{V_{\text{OUT}}}{V_{\text{IN}}}$$

$$\text{for buck-boost regulator } D = \frac{t_{\text{ON}}}{T} = \frac{|V_{\text{O}}|}{|V_{\text{O}}| + V_{\text{IN}}}$$

Catch Diode or Current Steering Diode

The diode, which provides a return path for the load current when the GS5276 switch is OFF.

Efficiency (η)

The proportion of input power actually delivered to the load.

$$\eta = \frac{P_{\text{OUT}}}{P_{\text{IN}}} = \frac{P_{\text{OUT}}}{P_{\text{OUT}} + P_{\text{LOSS}}}$$

Capacitor Equivalent Series Resistance (ESR)

The purely resistive component of a real capacitor's impedance (see Figure 6). It causes power loss resulting in capacitor heating, which directly affects the capacitor's operating lifetime. When used as a switching regulator output filter, higher ESR values result in higher output ripple voltages.

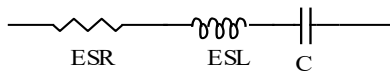


FIGURE 6. Simple Model of a Real Capacitor

Most standard aluminum electrolytic capacitors in the 100 μF –1000 μF range have 0.5 Ω to 0.1 Ω ESR. Higher-grade capacitors (“low-ESR”, “high-frequency”, or “low-inductance”) in the 100 μF –1000 μF range generally have ESR of less than 0.15 Ω .

Equivalent Series Inductance (ESL)

The pure inductance component of a capacitor (see Figure 6). The amount of inductance is determined to a large extent on the capacitor's construction. In a buck regulator, this unwanted inductance causes voltage spikes to appear on the output.

Output Ripple Voltage

The AC component of the switching regulator's output voltage. It is usually dominated by the output capacitor's ESR multiplied by the inductor's ripple current (DIIND). The peak-to-peak value of this sawtooth ripple current can be determined by reading the Inductor Ripple Current section of the Application hints.

Capacitor Ripple Current

RMS value of the maximum allowable alternating current at which a capacitor can be operated continuously at a specified temperature.

Standby Quiescent Current (I_{STBY})

Supply current required by the GS5276 when in the standby mode (ON /OFF pin is driven to TTL-high voltage, thus turning the output switch OFF).

Definition of Terms

Inductor Ripple Current (ΔI_{IND})

The peak-to-peak value of the inductor current waveform, typically a sawtooth waveform when the regulator is operating in the continuous mode (vs. discontinuous mode).

Continuous/Discontinuous Mode Operation

Relates to the inductor current. In the continuous mode, the inductor current is always flowing and never drops to zero, vs. the discontinuous mode, where the inductor current drops to zero for a period of time in the normal switching cycle.

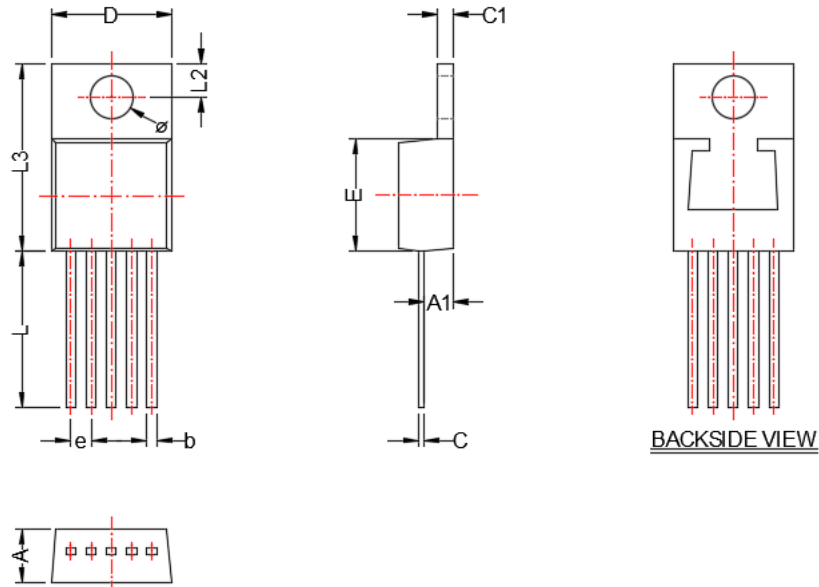
Inductor Saturation

The condition, which exists when an inductor cannot hold any more magnetic flux. When an inductor saturates, the inductor appears less inductive and the resistive component dominates. Inductor current is then limited only by the DC resistance of the wire and the available source current.

Operating Volt Microsecond Constant ($E \cdot \text{Top}$)

The product (in Volt $\cdot\mu\text{s}$) of the voltage applied to the inductor and the time the voltage is applied. This $E \cdot \text{Top}$ constant is a measure of the energy handling capability of an inductor and is dependent upon the type of core, the core area, the number of turns, and the duty cycle.

TO-220-5L

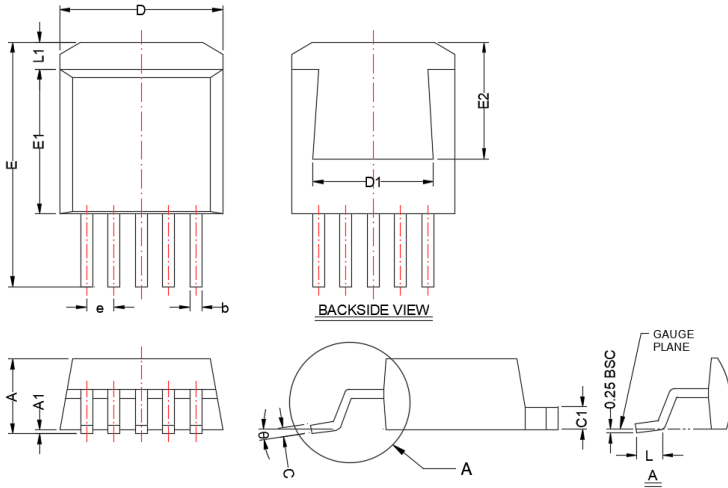


Dimensions				
Symbol	Millimeters		Inches	
	Min	Max	Min	Max
A	3.56	4.82	0.140	0.190
A1	2.03	2.92	0.080	0.115
b	0.38	1.14	0.015	0.045
c	0.30	1.14	0.012	0.045
c1	0.51	1.50	0.020	0.059
D	9.50	10.67	0.374	0.420
E	8.38	9.42	0.330	0.371
e	1.70 BSC		0.067 BSC	
L	12.00	14.73	0.472	0.580
L2	2.54	3.43	0.100	0.135
L3	14.22	16.51	0.560	0.650
∅	3.40	4.09	0.134	0.161

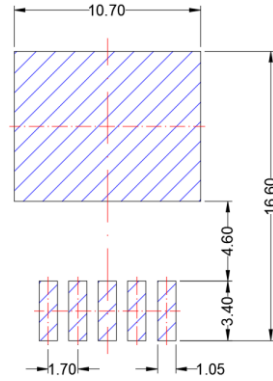
NOTE: Dimensions are exclusive of Burrs, Mold Flash and Tie Bar extrusions.

TO-263-5L

Package Dimension



Recommended Land Pattern

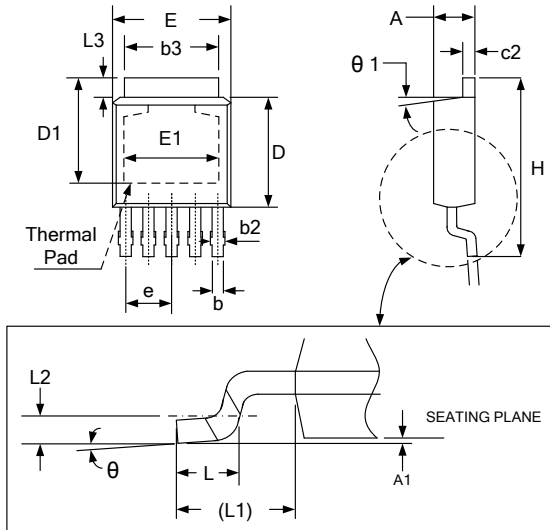


Dimensions				
Symbol	Millimeters		Inches	
	Min	Max	Min	Max
A	4.07	4.83	0.160	0.190
A1	0.00	0.26	0.000	0.010
b	0.51	0.99	0.020	0.039
c	0.38	0.74	0.015	0.029
c1	1.14	1.65	0.045	0.065
D	9.65	10.67	0.380	0.420
D1	6.22	---	0.245	---
E	14.61	15.88	0.575	0.625
E1	8.38	9.65	0.330	0.380
E2	6.86	---	0.270	---
e	1.70 BSC		0.067 BSC	
L	1.78	2.80	0.070	0.110
L1	---	1.68	---	0.066
θ	0°	8°	0°	8°

NOTE: Dimensions are exclusive of Burrs, Mold Flash and Tie Bar extrusions.

TO-252-5L

Package Dimension







Symbol	Dimensions In Millimeters		Dimensions In Inches	
	Min	Max	Min	Max
A	2.210	2.387	.087	.094
A1	0.010	0.127	.0004	.005
b	0.584	0.660	.023	.026
b1	0.559	0.635	.022	.025
b2	0.635	0.787	.025	.031
b3	5.232	5.436	.206	.214
c	0.509	0.559	.020	.022
C1	0.457	0.533	.018	.021
C2	0.483	0.584	.019	.023
D	6.000	6.200	.236	.244
D1	5.415	5.515	.213	.217
E	6.400	6.604	.252	.260
E1	4.902	5.004	.193	.197
e	1.27 BSC		.050 BSC	
H	9.601	10.210	.378	.402
L	1.391	1.651	.055	.065
L1	2.743 REF		.108 REF	
L2	0.508 REF		.020 REF	
L3	1.100 REF		.043 REF	
theta	0°	8°	0°	8°
theta1	7° REF		7° REF	



NOTE: Dimensions are exclusive of Burrs, Mold Flash and Tie Bar extrusions.

NOTICE

- Globaltech Semiconductor assumes no responsibility for equipment failures that result from using products at values that exceed, even momentarily, rated values (such as maximum ratings, operating condition ranges, or other parameters) listed in products specifications of any and all Globaltech Semiconductor products described or contained herein. Globaltech Semiconductor products are not designed for use in life support appliances, devices or systems where malfunction of these products can be reasonably expected to result in personal injury. Reproduction in whole or in part is prohibited without the prior written consent of the copyright owner.
- Applications shown on the herein document are examples of standard use and operation. Customers are responsible in comprehending the suitable use in particular applications. Globaltech Semiconductor makes no representation or warranty that such applications will be suitable for the specified use without further testing or modification.
- Information furnished is believed to be accurate and reliable. However Globaltech Semiconductor assumes no responsibility for the consequences of use of such information nor for any infringement of patents or other rights of third parties, which may result from its use. No license is granted by implication or otherwise under any patent or patent rights of Globaltech Semiconductor. Specifications mentioned in this publication are subject to change without notice. This publication supersedes and replaces all information without express written approval of Globaltech Semiconductor.

CONTACT US

GS Headquarter	
	4F, NO.43-1, Lane 11, Sec. 6, Minquan E. Rd Neihu District, Taipei City 114761, Taiwan (R.O.C).
	886-2-2657-9980
	886-2-2657-3630
	sales_twn@gs-power.com

RD Division	
	824 Bolton Drive Milpitas. CA. 95035
	1-408-457-0587